



Pursuing Excellence for the smallest reasons.

Bellin Health has been a pillar of our community for well over 100 years — and last year we made a move to show the patients and families of Northeast Wisconsin and Upper Michigan we are planning for the next century-plus. In December of 2022, Bellin Health and Gundersen Health System merged to provide our patients and communities with even more expert, community-centered care close to home.

Together, Bellin and Gundersen will invest in more technology and a broader network of services to improve access and care for the patients and families we serve. The communities in our region will continue to be our priority and The Bellin Health Foundation will continue its support of this region by making sure that 100% of the donations are used to serve Northeast Wisconsin and Upper Michigan.



We will continue to rely on your partnership and support to help us in our commitment to a future of healthy people and thriving communities. At Bellin Health we make the promise: “I will know you. I will show you respect. I will go with you on your journey. I am here to help you.” Your past support helped us become who we are today and your continued investment shapes patient outcomes and experiences of our future. Thank you for your continued generosity, we are deeply grateful for you.

**Chris Woleske**  
President, Bellin Region



**MISSION**

Bring community health to life through donor time, talent and treasure.

**VISION**

Enable Bellin Health to provide world-class care without financial compromises.

As we reflect on 2022, we feel tremendous gratitude for our partners and supporters who are helping us move the mission and vision of Bellin Health forward.

We are thrilled to celebrate the completion of our NICU and Maternity project in this report and also celebrate so many other accomplishments only achieved through your generosity. We are able to impact our patients’ lives because you are choosing to go with us on this journey, investing your time, talent and treasure.

We hope you will continue to go on this journey to bring community health to life. There are so many important projects on the horizon in the coming year, and we will need you now more than ever.

With gratitude,

**Nan Bush**  
President of The Bellin Health Foundation

**Molly Vandervest**  
Vice President of The Bellin Health Foundation



As a business owner and community member who believes in the collaborative future of the Bellin and Gundersen Health System, I am grateful to live and work where quality healthcare is a priority.

Our passionate Foundation Board of Directors supports this focus as we work together to locally grow the impact of The Foundation by increasing funds raised, and nurturing relationships with those who share our vision. On behalf of The Bellin Health Foundation, I offer our sincere appreciation for your dedicated support of the staff and patients of Bellin Health. We look forward to connecting with you as we jointly celebrate the Bellin and Gundersen initiatives surrounding healthy and thriving communities.

**Susan Van Gheem**  
Partner, CEO & Director of Business Development of Pension, Inc.  
& Chair of The Bellin Health Foundation Board of Directors

### The Bellin Health Foundation Leadership

The Bellin Health Foundation is fortunate to utilize the unique skills and talents of community members who believe in The Bellin Health mission and vision and want to advance the impact of The Foundation. The 2022 Board of Directors includes:

- Susan Van Gheem, Chair / Pension, Inc.
- Kristin Charles, PhD, Vice Chair / KD Charles Business Consulting
- Jim Ledvina, Secretary / Law Firm of Conway, Olejniczak & Jerry SC
- Michong Powers, Treasurer / Bellin Health
- Nan Bush, President / The Bellin Health Foundation
- Dr. Paul Casey / Green Bay Emergency Medicine
- Lynn Douville / The Karma Group
- Dave Honish / CESA #8
- Mark Kasper / Amerhart, Ltd.
- Paul Northway / American National Bank
- Matt Schachtner / Somerville, Inc. Architects and Engineers
- Chris Woleske / Bellin Health

#### Foundation Staff:

- Jeanette Brittain, Post Award Grants Administrator / jeanette.brittain@bellin.org / 920.433.3676
- Nan Bush, President / nan.bush@bellin.org / 920.433.3692
- Laura Cormier, Grant Researcher / laura.cormier@bellin.org / 920.433.3676
- Ashley Jones, Team Leader of Grants / ashley.jones@bellin.org / 920.433.3676
- Dawn McCole, Team Leader of Volunteer Services / dawn.mccole@bellin.org / 920.433.3632
- Kimberly Sommers, Foundation and Volunteer Coordinator / kimberly.sommers@bellin.org / 920.433.3632
- Molly Vandervest, Vice President / molly.vandervest@bellin.org / 920.433.7807
- Monica Wagner, Regional Development Specialist / monica.wagner@bellin.org / 920.433.3703



#### Special Thanks

In 2023, The Bellin Health Foundation said farewell to 11-year Foundation team member Amy Stach. Amy has been an integral member of the team and will be greatly missed as she takes on a new role at Bellin Health.

#### Contact Us:

**The Bellin Health Foundation**  
Physical Address: 740 S. Van Buren St., Green Bay, WI 54301  
Mailing Address: 744 S. Webster Ave., Green Bay, WI 54301  
Phone: 920.433.3731  
Email: TheBellinHealthFoundation@bellin.org





# Maternity/ NICU Project Becomes Reality

In 2022, Bellin Health opened a brand new Belmark Neonatal Intensive Care Unit and expanded the current maternity floor. The project represents Bellin Health’s commitment to serving our communities’ most vulnerable members.

The centerpiece of this initiative is the highly advanced Belmark Neonatal Intensive Care Unit (NICU) allowing parent and child to recover side by side. This model is the first of its kind in Wisconsin and one of only several of its kind in the United States.

The key goals of the project included: implementing a world-class, family-centered NICU at Bellin Health, including 14 private family suites and renovation and expansion to 22 maternity rooms including patient, antepartum, and labor and delivery rooms to meet the rising demand for birthing care at Bellin Health.

## Pursuing Excellence

Northeast Wisconsin is among the nation’s hotbed destinations for Millennial and Generation Z populations and members of these cohorts will be having children for the next couple of decades. While this points to a bright future for the region, it requires us to prepare now to meet the need.

In addition, the project was fueled by a desire to care for those babies born with high acuity. There are rising trends with high-risk births and Bellin Health’s NICU unit can now meet the needs for those patients and families.

The NICU design and plan was a reflection of feedback from our own patients and an effort to meet their needs. Prior to the unit’s opening, if Bellin Health patients had a baby with NICU needs they would deliver at Bellin Health and have to transport the baby to St. Vincent’s. Nicole Olson was one such patient whose first child needed to be transported but her second delivery ended in her twins staying in the new Bellin Health NICU. She said of her experience, “No matter the severity of your child’s health, being in the NICU can be scary, but the Bellin Health staff eased our way. We appreciated having the private space to spend with our babies, and this also made breast feeding more comfortable. I feel like Bellin Health’s NICU has really thought of everything!”

This project was years in the making and every single decision made was a result of tenacious research from models around the world. Here are a few examples of the project features that are helping meet so many different patient needs:

**Family-Centered Care Model:** Research underscores the benefits of having family present during our most vulnerable moments. It results in better communication, better emotional support, and a higher likelihood of full engagement in the care journey. Nearly everyone in the care equation reports a better experience, including patients, family members and the nursing team.

**Lighting:** The NICU rooms all feature lighting that mimics circadian rhythm for the babies. Research showed babies did better with having a more natural cycle of lights so our teams installed lighting units that change throughout a 24-hour cycle to give the babies a mix of dark and bright to match the natural cycle of daylight, which is showing to improve function and growth. In addition, specially designed lighting allows staff working overnights to maintain alertness but still get to sleep quickly at home after their shift.

**Noise Level:** A special alert system is in every room that shows an “ear” either in green (which signifies an acceptable noise level), yellow (telling families and staff to watch the noise level) or red (alerting those in the room they are too loud for baby).

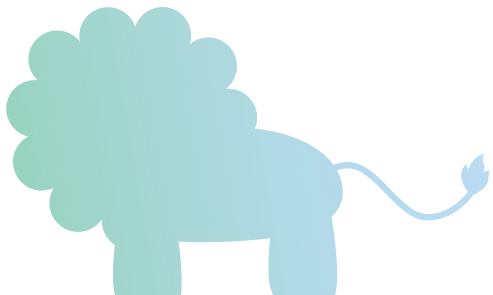
**Infection Prevention:** The unit includes an isolation suite, which is identical to the other suites but contains a special entry allowing for separation from the rest of the unit, helping to stop the spread of any kind of infectious disease. The NICU unit also features a special hand washing station that alerts people coming in to wash for the full 2 minutes prior to proceeding.

**Birthing Units with Baths:** The introduction of laboring tubs into two of the maternity rooms is a product of listening to our patients and partners. We view diversity and partnership as key to achieving meaningful innovation.



Our staff and clinicians across the system experienced excitement for this project as it will impact patients throughout the region. A number of Bellin Health team members contributed to the project personally, including Dr. Tangerine Dupuis, who is a family practice physician at Bellin Health’s Escanaba clinic. She supported the project because of what she’s seen personally with her own patients. “Several decades ago an infant patient of mine needed to be transferred to Green Bay for a serious cardiopulmonary illness. I still recall how absolutely thankful and grateful that her mom was when her little one was able to get the care she needed. I have also had to take an ambulance ride with a patient who was in premature active labor and for that reason, needed to go to Bellin for emergency care. The baby ended up doing great with the NICU care.”

The project included over \$5.5 million of donor support and The Bellin Health Foundation is so grateful to those generous donors. In Fall 2022 we also benefited from a \$250,000 matching gift from the Green Bay Packers Foundation as part of their Green Bay Packers Community Impact Grant Program. This incredible opportunity will match dollar for dollar all gifts to the NICU/Maternity department project up to \$250,000. You can learn more about the project at [infullembbracebellin.org](https://infullembbracebellin.org).







## Generational Impact

### Bellin Health Retirees Write New Chapter as Volunteers

Bellin Health is proud of the culture we have built over our 100+ years of history. One of our biggest testaments to our culture is when our own team members become volunteers as they enter retirement. Marcia Ward and Dorothy Treptow are just two of many retirees who are leaving this incredible legacy.

Marcia Ward attended the Taylor School of Nursing through Mayo Clinic in Rochester, MN. After traveling around the United States as a nurse, including stops in Colorado and California, Marcia found her home at Bellin Health. Starting in 1967, Ward stayed with our Surgery department until her retirement 28 years later.

Dorothy Treptow went to a Licensed Practical Nurse (LPN) school in Milwaukee and returned to Green Bay after her studies were complete. Dorothy began her 34 and a half years of employment at Bellin Health starting in 1958. She began her career on the 2nd floor, which was the General Medical and Surgery department, and then became a surgical technician.

Ward and Treptow both transitioned to volunteering and believe it keeps them young. Ward began volunteer duties in 2011 in her familiar home in Surgery and has now been with the Titledown Sports Medicine and Orthopedics Clinic in Ashwaubenon since its opening in 2017. She has volunteered over 3,500 hours at Bellin Health, including the Bellin Run and Bellin Women's Half Marathon. In addition, you can find her volunteering at the Green Bay Botanical Garden, Acts 1:8 Ministry, the election polls, and the Ashwaubenon Performing Arts Center.

Treptow came back to Bellin Health in 2010 and has volunteered over 3,800 hours. She volunteers in our Wound Healing Center three days a week and is treasured by their staff and patients alike. You can also find her volunteering for First Lutheran Church through a needle club, where she sews lap blankets for cancer patients.

Ward and Treptow both agree that the biggest satisfaction they get from volunteering at Bellin Health is the people. Treptow said, "I enjoy the people I work with... the patients are good to work with, and the employees of the Wound Clinic make the work enjoyable." Ward said, "I like working with different types of people. I enjoy working with the staff at Ashwaubenon Titledown, they are excellent to work with."



These women are leaving an incredible mark on Bellin Health with a combined 62 years as employees and 7,300 hours as volunteers. We are so grateful for the dedication to our patients, staff and communities we serve.

*Pictured from left to right, Bellin Health retirees and now volunteers Dorothy Treptow and Marcia Ward*

## Elevating the Voice of Young Professionals

In 2022, The Bellin Health Foundation embarked on a mission to elevate the voices of populations we have not specifically heard from in years past. Ashley Jones, Team Leader of Grants at The Bellin Health Foundation, coordinated the creation of the first-ever Young Professional Advisory Council (YPAC) – a subcommittee of The Bellin Health Foundation Board of Directors.

The YPAC provides input and participates in key Foundation functions and identifies ways to involve young professionals in the Bellin Health service area and in The Bellin Health Foundation work. The committee is comprised of diverse individuals in terms of sector represented, region/county of residence, race, ethnicity, and genders.

Thus far, we have obtained valuable insights and feedback on The Bellin Health Foundation functions such as volunteer services, capital campaign strategies, and communicating about the Bellin Health and Gundersen Health System merger. As we work to build impact of The Bellin Health Foundation, we recognize that young professionals are the future of our workforces and the populations we serve, and we value and utilize their input to continuously improve and evolve.

Bellin Health Region President Chris Woleske felt it was important to start growing the voice of young professionals in our Bellin Health system. "This important segment of our population is what will make our region succeed in the future. We are so grateful for their energy and enthusiasm and willingness to help engage in this work and make Bellin Health an organization they want to be a part of," said Woleske.



*Members of the Young Professional Advisory Committee (YPAC) pictured on a virtual meeting along with Bellin Health staff*

"Being a part of the Bellin YPAC has been an incredibly rewarding experience. Not only has it allowed me to gain valuable insights into the healthcare field, but it has also given me the opportunity to collaborate and network with like-minded individuals. Participating on the YPAC has given me the chance to influence change and positively impact the community through my involvement. I am proud to be part of an organization that is committed to making a difference in our region."

### Samantha Boucher

Tourism Director, Oconto County Economic Development Corporation

## Healthcare Technology Boosted by Grant Funding

Over the past year, grants have been secured to increase the presence and utilization of technology in healthcare provided by Bellin Health.

Thanks to a grant from the Federal Communications Commission, Bellin Health was able to purchase 1,000 TytoHome Kits to improve telehealth delivery service. These kits allow for patients to complete a visit with their provider via the included technology: camera, thermometer, otoscope, stethoscope, and tongue depressor. The TytoHome kit is designed to diagnose and treat conditions across general health, respiratory, ENT, cardiac, dermatology, and gastroenterology.

Additionally, Bellin Health received a \$903,000 grant to implement diabetic retinopathy screening technology in 30 of Bellin Health’s clinics across our service area. The grant, in partnership with DKBMed and Digital Diagnostics, allows Bellin Health to increase access for patients with Type 2 Diabetes to receive needed and timely care, and provide care coordination in partnership with regional ophthalmologists. “Implementing LumineticsCore™ technology from Digital Diagnostics in 30 of our Bellin Clinics has allowed us to significantly address gaps in care for our Type 2 Diabetes patients,” said Kathy Kerscher, Vice President of Primary Care Services. “Prior to implementation, approximately 60% of Bellin Health’s patients with T2D had not been screened in the past two years. Implementing these machines and services across our area removed access barriers to populations who may be at risk of diabetic retinopathy.”



Bellin Health TytoHome Kit users and patients Sam Jones and dad Troy testing the new technology

“The COVID-19 pandemic required Bellin Health to think innovatively about our patients’ needs. Funding received from the FCC was utilized to purchase TytoHome Kits for our patients to ensure there were no gaps in care, and that telemedicine appointments would be just as thorough and effective as in-person appointments, with added convenience.”

**Kathy Kerscher,**  
Vice President of  
Primary Care Services

## Packers’ AJ Dillon Teams Up to Tackle Cancer

Green Bay Packers running back AJ Dillon and wife Gabrielle are making an impact on Bellin Health Cancer Team patients with a generous \$100,000 donation to the unit. The gift will benefit the Cancer Team and its patients tremendously, and further underscores the ongoing support from the Dillons.



At center Gabrielle and AJ Dillon holding the #28 Bellin Health Cancer Team t-shirts after presenting their \$100,000 gift to members of the Bellin Health team

“We can’t thank AJ enough for all he’s done for our patients and team, so we wanted to give a little something back,” said Jordan Rometti, Bellin Health Team Leader, Oncology and Hematology Business Operations. “This was a really special day for us all.”

Alicia Caldwell, Bellin Health Team Leader, Oncology and Hematology Services, said, “We are incredibly grateful to AJ and Gabrielle for choosing the Cancer Team as their charity of choice, and to AJ for taking the time to visit with our patients. From his visits with our patients to his support of the Packers vs. Cancer initiative and now this generous donation, we can’t thank him enough for all he has done for our team and for this cause.”

Dillon has spoken openly about his mother-in-law’s breast cancer diagnosis and treatment, and was on hand at the Cancer Team when she had her final treatment in June of 2022. Funds from a fantasy football win earlier this year and a charitable partnership with U.S. Venture helped enable the Dillons to make the gift.

Dillon was on hand to present a check in October of 2022 and shared sentiments about the gift he presented saying, “We are so grateful to the Bellin Health Cancer Team for taking such great care of my mother-in-law, and it feels good to be able to give back in this way. That said, today was about more than this donation. It meant so much to me to meet with patients, hear their stories and hopefully make treatment day a little brighter for them and their loved ones.”

Dillon’s visit may have been a surprise to patients, but the Cancer Team staff were well prepared — even preparing a special surprise of their own for Dillon when he walked in. Clad in pink Bellin Cancer Team T-shirts bearing AJ’s #28, they presented him with an oversized card expressing their gratitude.



Leaving a Legacy  
Concerned Hearts Club Starts New Era

The Bellin Health Concerned Hearts Club began in 1974 after club founders Regina Bosacki, Ralph Leurquin and Joe Delveaux experienced open heart surgery at St. Luke’s in Milwaukee and enjoyed benefits of organized efforts to ease their way as heart patients. They brought those experiences to Bellin Health and the club grew from 14 members to over 500 throughout their history.

The club’s main focus was to support Bellin Health cardiology patients through a variety of means including emotional support for patients and families, providing comfort measures such as the “heart hugger” pillows for patients who experience open heart surgery and even raising funds for Automated External Defibrillator (AEDs) needs throughout the region for community organizations.

Since 1974, The Concerned Hearts Club at Bellin Health raised and invested over \$330,000 for cardiac support throughout Northeast Wisconsin. As they looked to their membership in a post-pandemic world, the club made the difficult decision to dissolve but in doing so, created a new era of impact.

As they looked to the future, the club members believed the investment in the healthcare workforce would be a lasting way to leave their club’s legacy. In Fall 2022, the group held their last official meeting and voted to use the balance of the club’s funds to start an endowed scholarship at Bellin College for nurses entering in the cardiac field. The endowed scholarship will mean the club’s legacy will go on and will continue to impact cardiac patients for years to come.



Former members of the Concerned Hearts Club

The Bellin Health Foundation  
would like to extend a sincere  
**thank you**  
for the thousands of hours and  
incredible generosity of the club  
members throughout their  
48-year history.

A Leader’s Legacy  
What is Planned Giving?



Planned giving is another way of saying that you have taken steps to include a gift to your favorite charity in your will after you pass away. This means that instead of writing a check today to support a favorite non-profit, you include your written intention to do so in your will. It can be as simple as, “I leave X% of my estate to Charity Y”, or you may indicate a specific dollar amount. Many people do not know that gifts made through a will are hugely impactful and important to charities. Terry Fulwiler is someone who is very familiar with including charities in his will and has agreed to share his story.

Why include a gift to your favorite charity in your will?

If we go back to the beginning, Terry was raised by parents who instilled in him the importance of “giving back” to his community. He believes that if you help people improve themselves, they can help their own family, as well as others. Terry believes that all people should plan to give something back unless they have to spend their last dime on food to feed their family. Most people can give something. In addition, for those who either can’t or choose not to write a check today to their favorite charity, they can include a gift to the charity in their will.

How to include a gift to charity in your will?

Now it is easier than ever through online will preparation portals, such as FreeWill. It is always a good option to seek out an attorney to prepare your will; however, in today’s society, more and more people realize how important it is to have a will and choose the online will preparation portals because they provide a low-cost (in many cases free) will preparation option, which is fast, easy and convenient.

Will leaving a gift to charity in your will compromise your family?

Terry explains that the beauty of giving through your will is that you may still take care of your family and yet designate a portion of your estate to a meaningful charity. This allows you to help so many more people. Terry’s motto is the 80/20 rule; if you live to be 80 years old, you ought to give 20% of your estate to charity through your will.

What are other ways to give?

Terry states that time, talent and treasure are all valuable ways to give. Including a gift to a charity in your will is a great way to support a charity of your choice through your accumulated treasure. Terry choses to support several charities through his will, each representing either education, healthcare or the arts. His advice is to include a charity that you feel strongly about. He also advises that the gift be undesignated, in other words, the gift to the charity should be for “whatever is needed most.” The people working closely with the daily operations of the charity should know the most urgent needs and therefore, an undesignated gift will support the charity’s most pressing needs.

Final thoughts?

Terry includes Bellin Health in his will because he has a long history with Bellin as a board member, and therefore he knows firsthand about all the good work Bellin does in this community. Most importantly, he believes that great healthcare is critical to all communities and believes that Bellin Health provides the best high quality, state of the art healthcare services in our region.

Are there any benefits by including Bellin Health in your will?

Yes, it’s a great feeling to know that you have taken steps to help others after you’re gone, through a gift to a charity in your will. Also, people who include Bellin Health in their will or estate plan are invited to join The Bellin Health Foundation Legacy Society. This Society recognizes them and invites them to an annual luncheon with Bellin Region President Chris Woleske.



Terry Fulwiler  
Member, Bellin and Gundersen  
Health System Board of Directors



## Bellin Health Team Members Share Their #BellinLove

Bellin Health Team Members are incredibly generous supporters of The Bellin Health Foundation. Every year employees have the opportunity to contribute to The Foundation through the Bellin Love Giving Program, formerly known as the Employee Sharing Program. In 2022, the combined efforts of Bellin Health's employee base resulted in a record-high year for the campaign, totaling \$228,182.78.

The 2022 campaign, themed "Show Your #BellinLove," included 27% participation amongst team members and over a dozen Bellin Health projects and programs received fund designations. The Bellin Love Giving Program is an opportunity for Bellin Health team members to share in our culture of gratitude and give back to The Bellin Health Foundation, which supports our programs, services, staff, patients and so much more.

Dr. Elizabeth Russel is a physician at Bellin Health's Oconto Hospital and Medical Center and shares her sentiments about why she gives. Russell said, "I like to donate to the Bellin Love Giving Program because having been very blessed in my life, I feel it is important to give back to organizations that I am passionate about and help other people who have been less fortunate than myself. Having worked in both primary care and emergency medicine over my 30+ year career, I have witnessed firsthand the financial struggles of patients who are in need of healthcare that they cannot afford. Healthcare that is related to illnesses or diseases that are not preventable or related to lifestyle choices. All too often I have seen patients choose between food and medications. Thus I usually donate to the Patient Assistant Fund because I know that this money will go directly to patients in need thanks to the responsible operation of this fund by our wonderful social workers, especially Beth Golonka, who I have had the privilege of working with for many years."

The campaign runs every February and includes support from campaign co-chairs Chris Woleske and Dr. Brad Burmeister. Thank you to all of our team members who stepped up to the challenge and showed their #BellinLove.



Dr. Elizabeth Russel

## 2022 Black Tie & Blue Jean Extravaganza

This fun-filled and fashion-forward annual fundraiser was back in action in 2022 after a 2-year hiatus due to COVID-19. The event came back strong, raising a record \$196,000-plus for a very worthy cause — our own Bellin College and its work to expand access and remove financial barriers for our healthcare workforce.

"We are thrilled with this new fundraising record, and more importantly for what these dollars mean for Bellin College — and by extension, for the healthcare workforce of the future," said Nan Bush, President of The Bellin Health Foundation. "The more we can help increase access and ease the way for the medical professionals of tomorrow, the better equipped we will be to tackle healthcare workforce challenges and ensure we continue to provide the very best in care for the patients and communities we serve."

### Meeting the Needs — Together

The healthcare workforce has experienced unprecedented challenges over the last nearly three years due to the COVID-19 pandemic. The need for healthcare professionals is critical, and Bellin College prepares its students to be leaders in this rapidly changing industry through focused curriculum and hands-on clinical practice. Bellin Health is fortunate to employ many Bellin College graduates to provide excellent, compassionate patient care.

Bellin College has educated approximately 4,300 students since its founding in 1912 and is in the process of launching a campaign designed to meet the needs of its expanded degree offerings, and to boost financial aid. The college is working to provide additional scholarships to remove financial barriers that inhibit or dissuade talented people from pursuing their passion for healthcare. In addition, Bellin College is raising funds for office space and program expansion, along with the tools and resources needed to accommodate its new programs.

### Looking Back, Looking Ahead

Since 2006, the Black Tie & Blue Jean Extravaganza event has invited Bellin Health supporters for a one-of-a-kind event where guests are invited to mix and match formal and casual wear. In 2022, more than 500 individuals supported the event through sponsorships, ticket sales, a raffle and a second-to-none live auction. The theme for the night at the Lambeau Field Atrium was "Through the Decades," and attendees dressed the part as they celebrated once again coming together for a great cause. Join us at this year's event on Friday, September 15, 2023 at the Lambeau Field Atrium.

Full details at [blacktieandbluejean.com](https://blacktieandbluejean.com)



Members of the 2022 Black Tie & Blue Jean Extravaganza Planning Committee  
featured on stage at Lambeau Field



By the Numbers

Donors, Volunteers and Grants

In fiscal year 2022, The Bellin Health Foundation continued to see donor investment and impact across a number of programs and services. Fiscal year 2021 included gifts from the Maternity/ NICU Renovation and Expansion. Below please find a snapshot of some of those statistical highlights. You can find a full audited financial statement at [bellin.org/bellin\\_foundation](https://bellin.org/bellin_foundation).

REVENUE

FY 2021 Contributions.....\$5,507,194

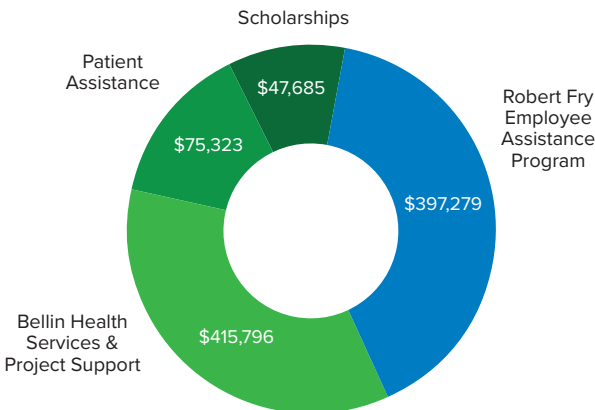
FY 2022 Contributions.....\$2,636,421

EMPLOYEE LOVE GIVING PROGRAM

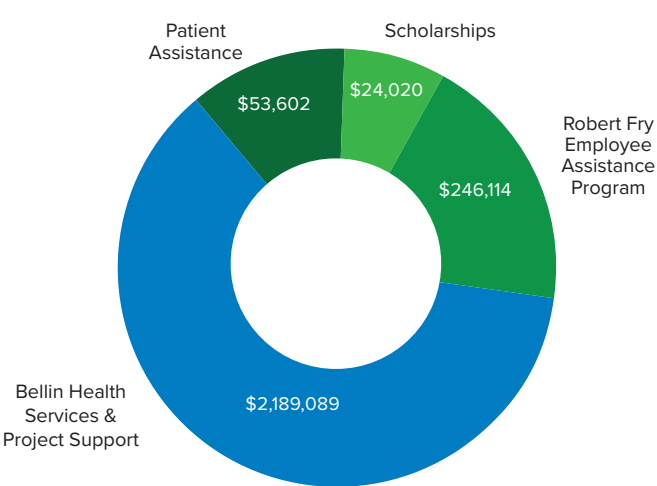
FY 2021 Contributions (21% participation).....\$145,295

FY 2022 Contributions (27% participation).....\$228,182

INVESTMENT 2021

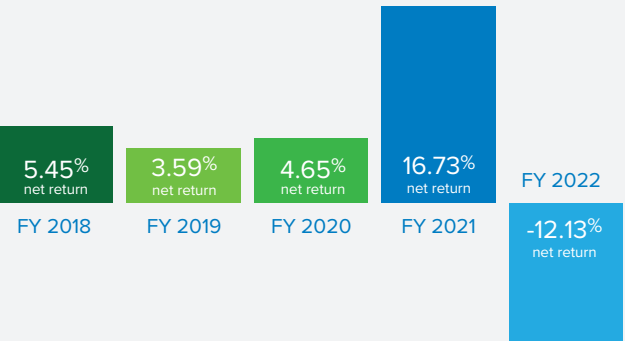


INVESTMENT 2022



RETURN ON INVESTMENT

The rates of return reflect 1-year periods ending September 30.



VOLUNTEERISM

	2021	2022
Active Volunteers	295	200
Hours of Service	15,144	20,487
Labor Cost Value	\$235,101	\$318,376

GRANT FINANCIALS

Oct 2021 – Sept 2022

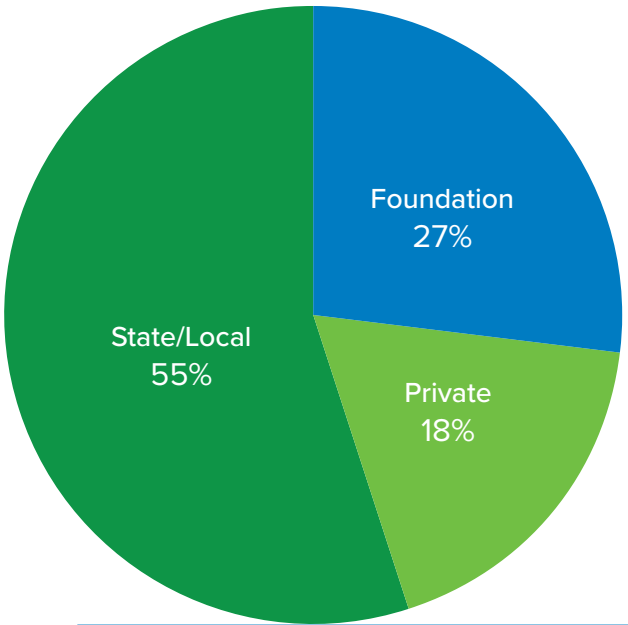
	FY 2021	FY 2022
Total Grants Submitted	22	42
Total Amount Requested	\$8,100,000	\$14,876,958
Total Amount Awarded	\$1,698,830	\$1,930,094

55% more applications submitted than FY21

2021 included Covid grant dollars

FUNDER TYPE 2022

Foundation	27%
State/Local	55%
Private	18%



Looking to the Horizon  
Changing Healthcare. Changing Lives.

In a time of breathtaking change, human care remains the greatest investment any of us can make. The Bellin Health Foundation is pursuing not one, not two, but three investment pillars that will transform how healthcare is experienced in Greater Green Bay for generations to come.

This initiative is called Changing Healthcare. Changing Lives.

And it does not overpromise.

By expanding services closer to home, moving care outside of traditional hospitals, and welcoming more world-class talent, we counter the greatest threats to people's health: a lack of time and money. The three pronged campaign will include:



**Children & Adolescent Clinic**  
Highly-tailored, age-appropriate care. Right here.



**Bellin Health Surgery & Specialty Center**  
An easy on-ramp to more advanced, affordable care.



**Bellin College**  
Achieving new heights in health, healing & education.

The campaign is a collaborative effort between The Bellin Health Foundation and Bellin College. We look forward to working with our supporters over the next few months to talk about interest in supporting these important initiatives. To learn more, visit [bellinfuture.org](http://bellinfuture.org).



Volunteers of the Bellin Expressive Arts in Medicine (BEAM) Program

Let's Connect!

The Bellin Health Foundation would love to hear from you. We have so many ways to engage with you as our critical partners. Here are a few:

Share Your Story

We love to hear from our patients and friends and are excited to learn about how your Bellin Health experience has shaped you and your family. You can email your story to [thebellinhealthfoundation@bellin.org](mailto:thebellinhealthfoundation@bellin.org) or visit [bellin.org/bellin\\_foundation](http://bellin.org/bellin_foundation) and click on the Grateful Patient tab.

Learn

Bellin Health is constantly innovating and working to improve all aspects of care for the patients and communities we serve. Learn more about our offerings and updates through the following platforms:

[bellin.org](http://bellin.org)    

Volunteer

Bellin Health has a variety of patient-facing volunteer opportunities, as well as back-end support to help teams across our entire system. If you are interested in becoming a volunteer, please call **920.433.3697** or email [volunteerservices@bellin.org](mailto:volunteerservices@bellin.org). We'll match your particular interests, skills and availability with hospital needs.

Align With Us

Supporters of The Bellin Health Foundation are supporting all of our medical staff and programs at Bellin Health. If you do not have a Primary Care team, we encourage you to align with us at Bellin Health. Having a Primary Care Provider gives you a first line of defense. They are often the first to notice the small changes in your health that could signal bigger problems, and seeing them should be your first healthcare priority.

Learn more about our providers at [bellin.org](http://bellin.org).

Engage

You can also engage with The Bellin Health Foundation at the 16th Annual Black Tie & Blue Jean Extravaganza. Funds raised from the event this year will go toward Bellin Health Psychiatric Center's gym renovation. The event will take place on Friday, September 15, 2023 at the Lambeau Field Atrium. Full event details at [blacktieandbluejean.com](http://blacktieandbluejean.com)

Partners in Excellent Outcomes

In 2022 Bellin Health and Gundersen Health Systems completed an exciting merger of equals. Together, Bellin and Gundersen will offer access to more resources and a broader network of services to improve care for the patients and families we serve. Though the network is expanding, the campaign's mission remains, and 100% of the donations will be used to serve Northeast Wisconsin.

**bellinhealth**

**GUNDERSEN**  
HEALTH SYSTEM.

Give

Through the generous contributions of our community friends and partners, The Bellin Health Foundation is able to enhance the quality of care and the breadth of services we provide to the regions we serve. We hope you will consider a number of different ways to contribute including:

- Grateful Patient Program Support
- Legacy Society (Planned Giving Program)
- Memorial & Tribute Gifts
- Capital Project Support
- Scholarships

If you would like to learn more about any of these opportunities, please visit [bellin.org/bellin\\_foundation](http://bellin.org/bellin_foundation) or call **920.433.3731**.



Scan to  
LEARN MORE



visit: [bellin.org/bellin\\_foundation](http://bellin.org/bellin_foundation)

*The* **bellin** health  
FOUNDATION

744 S. Webster Ave.  
Green Bay, WI 54301  
920.433.3731  
[thebellinhealthfoundation@bellin.org](mailto:thebellinhealthfoundation@bellin.org)